

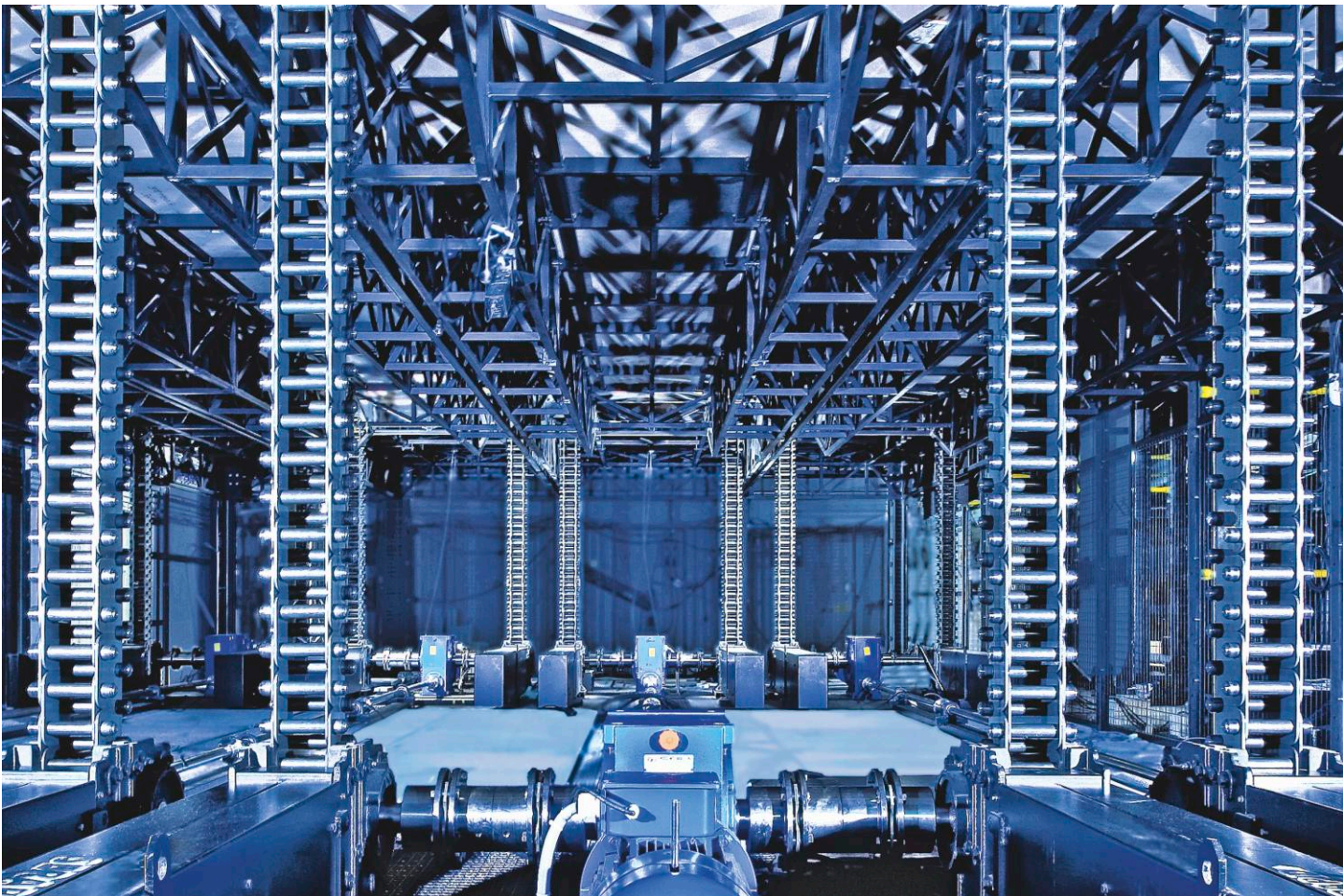
features and references

LinkLift

LinkLift

The lift system for the entertainment industry

the art
of
motion



SERAPID
RIGID CHAIN TECHNOLOGY

Our LinkLift series of elevator driving systems has been enthusiastically welcomed in the entertainment industry. Worldwide installations in theatres, concert halls and arenas have made the LinkLift a standard in load capacity and elevating height, as well as for safety, reliability and flexibility.

This success is due to the LinkLift's unrivalled technology, which allows high-performance solutions to be implemented easily even in complex projects and demanding environments. Our comprehensive range of models has the right lift system for small tables as well as for big platforms.

At the leading edge: the LinkLift series for stages, orchestra pits and multi-purpose venues

SERAPID has been active in linear-motion devices since 1972. The rigid pushing chain, our own development and the core of our technology, is used in a broad range of industrial applications. The LinkLift is a special type of rigid chain, designed specifically for the vertical movement of heavy loads in the entertainment industry.



the art
of
motion



mechanical

The LinkLift is a chain of specially shaped links interlocking under a load to form a rigid lifting column.

telescopic

When inactive, the lifting chain remains flexible so it can be redirected, coiled and stored efficiently.

strong, stable, reliable

The links are block-shaped with square cross-sections, and the centre of gravity is right in the geometric centre. When aligned and interlocked with each other, they form a lifting column of high stability and rigidity.



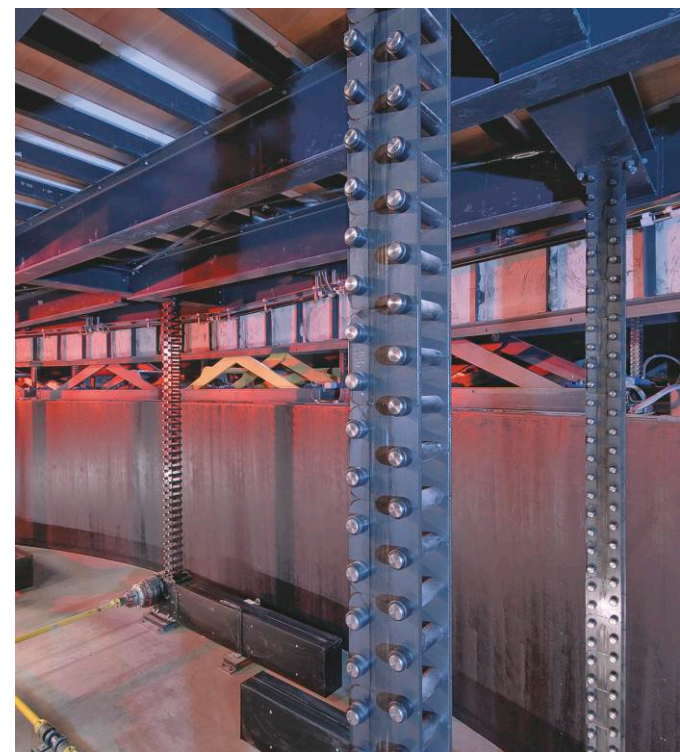
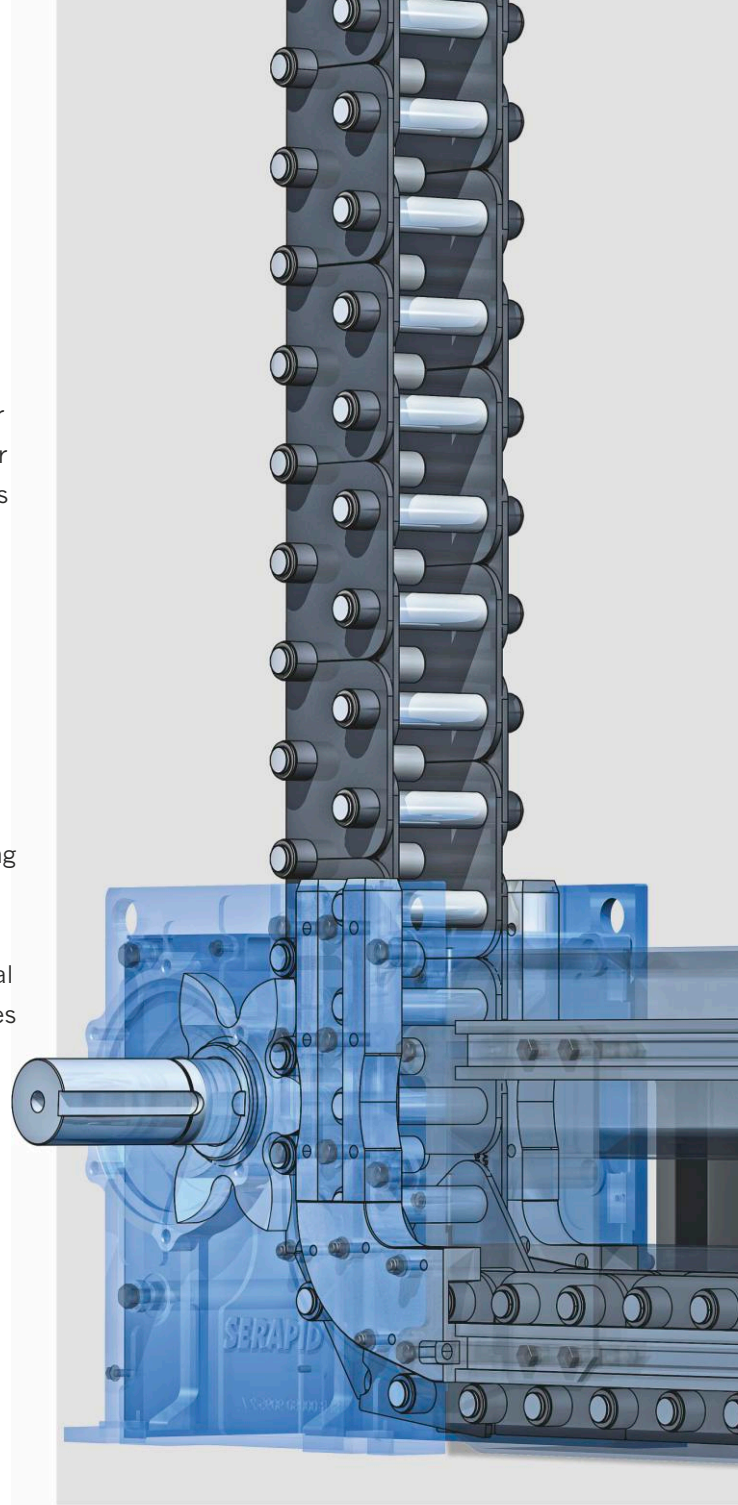
Four key features

Complete range of models: The range of our LinkLift models allow solutions to match your exact specifications. The standard range goes as far as 150 kN of dynamic load per lift column, and up to 8 m lifting height. Simple modifications allow heights up to 20 m.

Safety: The LinkLift complies with all safety standards currently applicable in the entertainment industry. It is also able to take up external pulling forces, such as those occurring through seismic shock or at sea – making it the first choice for stages on cruise liners.

Reliability and lifetime: SERAPID mechanical actuators prove their performance capabilities in the toughest industrial environments. The LinkLift benefits from these experiences, ensuring a long life and low maintenance.

Speed and noise: Chain movement is only dependent on the rotation of the input shaft, creating a wide range of speeds. Its slow rotational movement gives excellent acoustic characteristics. Standard speeds are up to 300 mm/s.



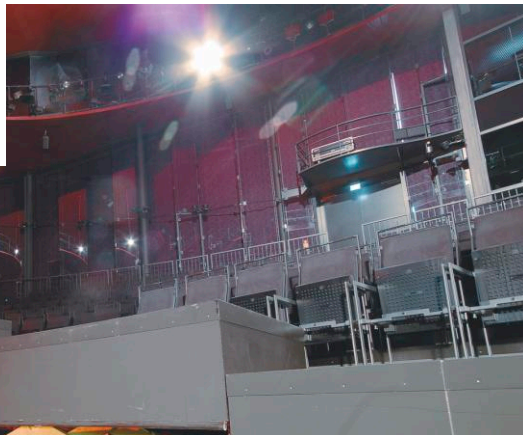
SERAPID
RIGID CHAIN TECHNOLOGY

Highlights of stage and venue engineering: LinkLift installations all over the globe

Performance and ease of use have made the LinkLift a star – and not just on, or rather under the best-renowned stages in the world, but also at sea, on modern cruise liners. The diversity of installations is proof of the flexibility of this lifting concept. It expands your possibilities without limiting creativity.

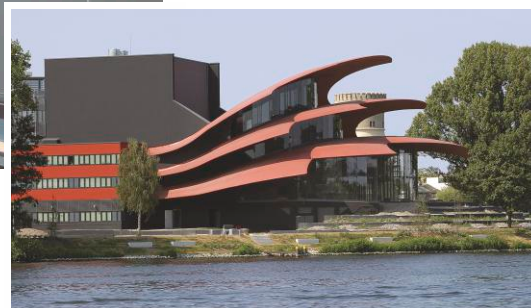
Russia *Bolshoi Theatre*

Moscow's historical ballet and opera house, originally built in 1824, underwent a major restoration in the years 2005 to 2011. Besides reconstruction of the famous neo-classical facade and traditional interior, many stages and platforms were refitted with LinkLift systems.



Germany *Hans-Otto-Theater*

The newly built theatre at Potsdam, near Berlin, features a multi-functional auditorium. Fifty lifting tables fitted with LinkLift 30 systems allow the entire room to be reconfigured in just a few minutes. In addition, there is a large orchestra pit with a platform moving on LinkLift 80 systems.



On board

At sea, special conditions for stage equipment lead to very specific guiding constraints. LinkLift solutions are often called upon because of their dynamic qualities, which also include the capability to withstand tension as well as compression.



USA

Walt-Disney Concert Hall

Designed by the architect Frank Gehry, the concert hall in Los Angeles provides a spectacular stage environment for both small groups and big orchestras. We are proud to have provided all the lifting equipment with systems using our LinkLift 50 and 100 columns.

the art
of
motion



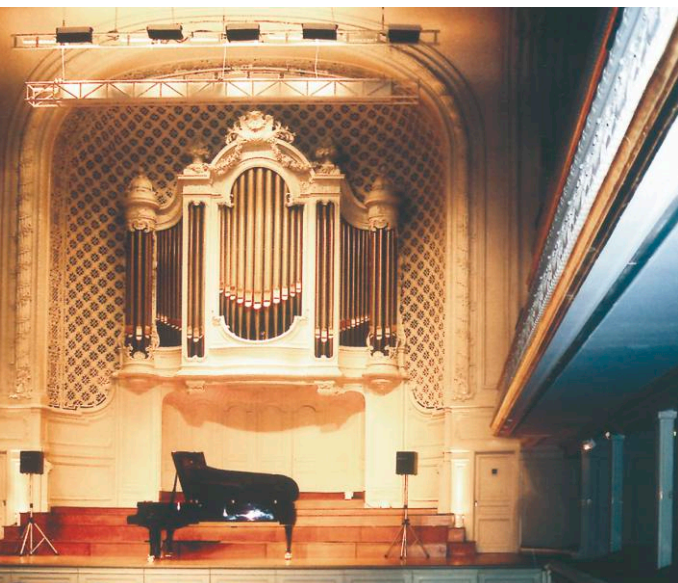
LinkLift installations all over the globe



Denmark

Copenhagen Opera

The opera house at Copenhagen has benefited from SERAPID technology for three lifts reaching speeds of up to 300 mm/s and strokes of up to 13.4 m. The flexibility and strength of our LinkLift products meant the demanding project specifications were realised without any compromises.



For more examples and reference installations visit our website at www.serapid.com.

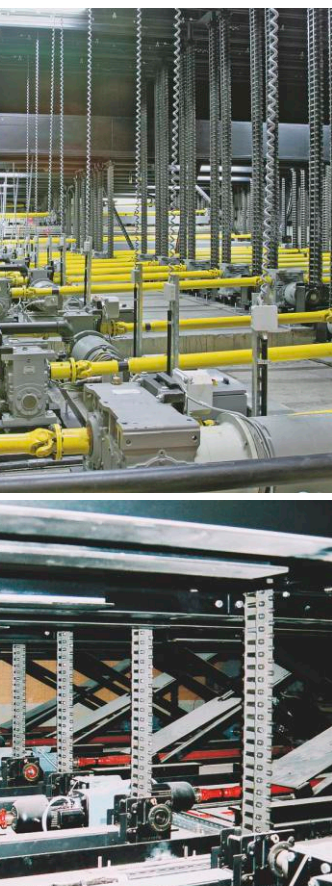
Our experts are your partners

From the first stages of planning, SERAPID offers to provide its know-how and expertise to your project. Our application engineers are available to undertake an analysis of specifications in order to optimise your project solution.

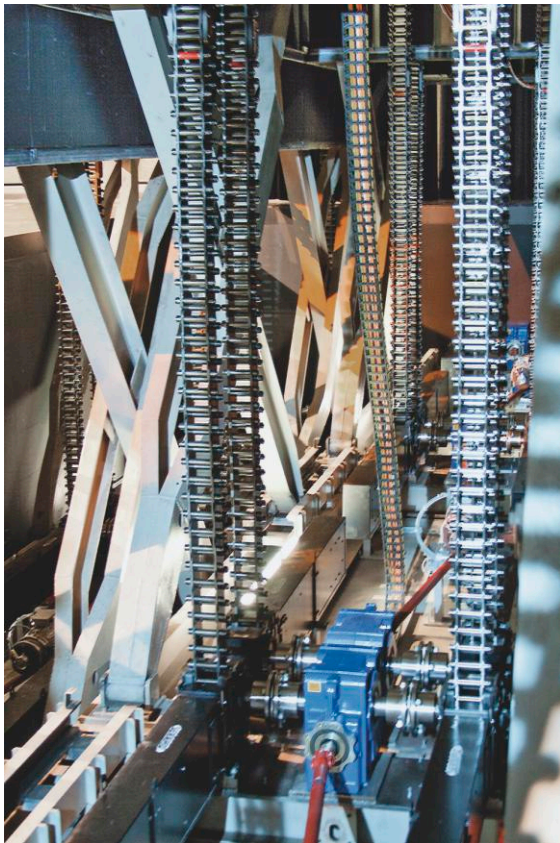
Design support: Whether calculating the power required for a particular system or the overall impact of an alternative solution, SERAPID engineers are always ready to help. Our substantial range of products enables us to offer a multitude of solutions. Our engineers' drawings make it simple to integrate the lift systems into overall designs.

Information and assistance: A practical guide is available for engineers, architects and consultants to select the right columns and drive systems. Our design rules are also thoroughly described and illustrated, from initial sizing to final orders.

Advice at hand: Our LinkLift customers are welcome to contact the SERAPID team at any time: Our dedicated and attentive staff will always give an accurate and direct answer to any question. The success of our company is not only due to the quality of our products and our professional competence, we owe much to the thriving relationships we have with our customers, demonstrating our will to build long-lasting partnerships.



LinkLift



SERAPID
RIGID CHAIN TECHNOLOGY

SERAPID Ltd

Elm Farm Park, Great Green, Thurston
Bury St Edmunds – IP31 3SH, UK

Tel: +44 (0)1359 233335

Fax: +44 (0)1359 232800

info-uk@serapid.com

STI SERAPID Group

ZI Bleue L. Delaporte
F-76370 Rouxmesnil-Bouteilles, France

Tél. +33 (0)2 32 06 35 60

Fax +33 (0)2 32 06 35 61

info-fr@serapid.com

SERAPID Deutschland GmbH

Postfach 1711
D-97967 Bad Mergentheim

Tel. +49 (0)7931 96 47-0

Fax +49 (0)7931 96 47-28

info-de@serapid.com

SERAPID USA INC.

34100 Mound
Sterling Heights MI 48310, USA

Phone +1 586 274 0774

Fax +1 586 274 0775

info-us@serapid.com